

# FG901MCP\_AP ADDRESSABLE MANUAL CALL POINT



## PRODUCT OVERVIEW

The new analogue **FG901MCP\_AP** communicates with all the fire-fighting control units equipped with the protocol, it can be reset using the supplied key and is equipped with a front LED and possibly with a transparent cover (optional).

Each **FG901MCP\_AP** can be addressed manually, by programmer or by fire detection control unit with FIREGUARD protocol or with auto addressing by fire detection control unit with protocol.

## GUARANTEED COMMUNICATION

The **FG901MCP\_AP** is equipped with an integrated short-circuit isolator.

This means that in the event of a failure on a loop or on a single device, communication with the devices themselves is not interrupted.

Thus greater system reliability is guaranteed.



## Features

- Applus approved in compliance with EN54-11 EN54-17 standards
- Communication protocol
- Isolator integrated in each device
- Manual addressing via the programmer
- Auto addressing for devices on loops even with "T" connections
- Auto mapping function
- Reading of the voltage value at the terminals of the addressed devices
- 240 devices per loop
- Three-colour LED (red / green / yellow) controlled by the control unit
- Certificate n°1922 - CPR - 1115

## Technical Specification

Certification body :	Applus
Certification :	EN54-11 EN54-17
Loop :	Up to 240 devices along 2Km of cable *
Supply voltage :	27V
Stand by consumption :	120uA@27V
LED current consumption :	6ma(24V-line)
IP class :	IP30
Operation temperature :	-20°C/+65°C
Humidity :	95% RH (without condensation)
Dimensions :	87x87x54mm
Weight :	110g

\* Note: subject to load calculations and use of appropriate cables

MODEL	DESCRIPTION
FG901MCP_AP	Addressable intelligent analogue manual alarm call point



## SIMPLIFIED INSTALLATION

The installation of **FG901MCP\_AP** is very simple, the programming of the addresses takes place via the programmer or through auto addressing, no DIP switches or rotary switches are used.

Auto addressing for devices on loops also operates with "T" connections



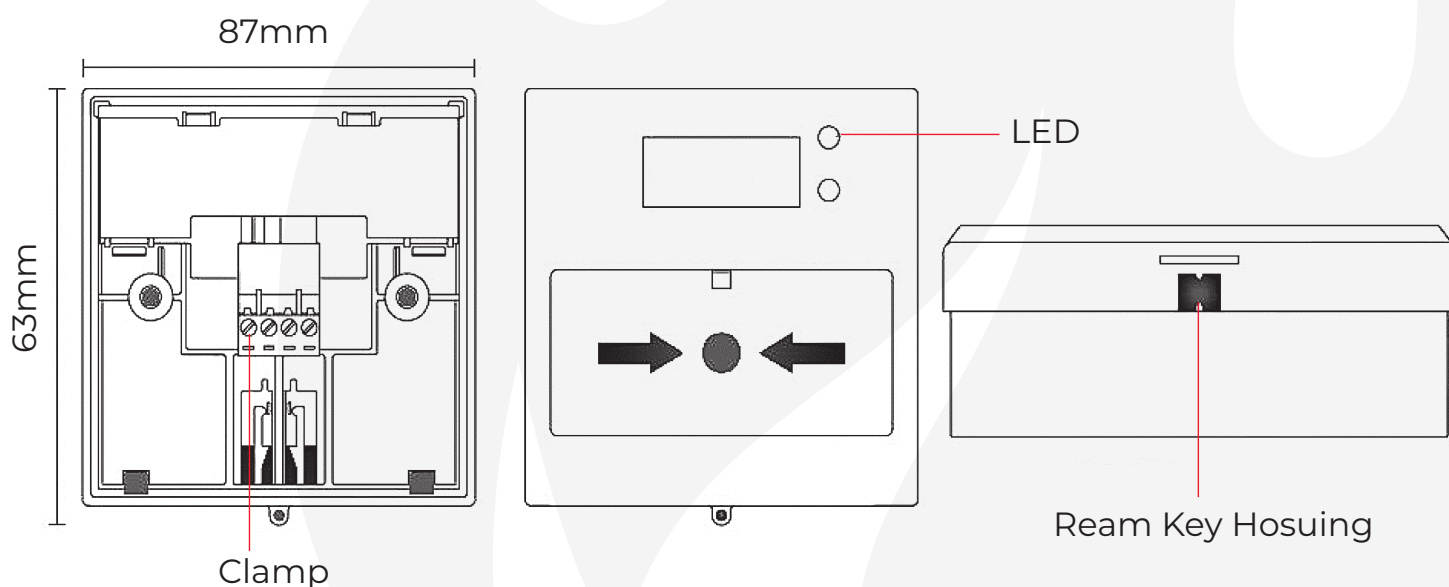
## CONSTRUCTION

**FG901MCP\_AP** is made of red ABS. It is equipped with a practical removable terminal block that facilitates installation.

It is possible to use cables with a maximum section of 2.5mm.

## APPROVALS AND COMPLIANCE

**FG901MCP\_AP** is Applus certified according to the EN54 standard parts 11 and 17.



“ Fireguard aims to be customer's first choice to safeguard from hazardous fires, by designing, developing the latest technology products with high quality and reliability.”

### FIREGUARD GLOBAL LTD.

Tel: 00-44-8450751042

Fax: 00-44-8459751043

Email: [Info@Fireguard-Uk.com](mailto:Info@Fireguard-Uk.com)

[www.fireguard-Uk.com](http://www.fireguard-Uk.com)



Unit 11 · Chancel Industrial Estate · Newhall Street  
Willenhall · WV13 1NX · United Kingdom



FS546607



Fire Guard / FG901MCP\_AP